

SCHOOL OF ARCHITECTURE OKLAHOMA STATE UNIVERSITY



▲ Professor Moh Bilbeisi humorously created a charrette cart of faculty and staff, celebrating the end of the 2022 Spring semester.

◀ (Cover) The Architecture Travel/Study abroad group in Versailles, May 2022!

Newsletter designed and published by Suzanne Bilbeisi at the Oklahoma State University School of Architecture. Printed on Mohawk Via Light Gray with a smooth finish. Bound at the Oklahoma State University School of Architecture. Original content authors retain copyright of their creative work.

©2022 The Oklahoma State University School of Architecture

Image Credits:

Pg 1: Jerry Stivers; Pgs 2, 8-9, 44, 48: Moh'd Bilbeisi; Pgs 4, 40, 42, 44: Suzanne Bilbeisi; Pg 7: Dan Wheeler; Pg 11: Critical Mass Studio; Pgs 13, 15: Jacey Watson; Pg 17: Olivia Bailey; Pgs 18-19: Molly Hoback and Jordan Hill; Pgs 20, 21: Legend of the Western Town class; Pg 21: Oklahoma Historical Society; Pg 22: Liam Vennerholm; Pg 22: Oklahoma History Center; Pg 22: Coleman Little; Pgs 24-25, 38: OSU Photographer Phil Shockley; Pg 26: Sidney Curtsinger; Pg 28: Nathan Richardson; Pg 30: Christina McCoy and Isaac McCalip; Pg 33: Cassidy Cluck; Pgs 35, 38: Randy Seitsinger; Pg 37: Grace Rykard; Pgs 46, 47: School Archives; and Pg 47: Bob Heatly's Facebook page.

The vision of the School of Architecture is to empower students to make creative contributions in the cause of architecture.

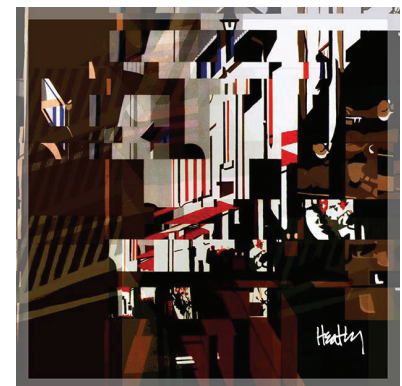
The mission of the School of Architecture is to cultivate a collaborative learning community focused upon critical thinking and ethical responsibility. We embrace established fundamentals and encourage the exploration of emerging innovations in design and technology.

Reflections
Vol. X Spring 2022



Retired from OSU since 1999, **Professor Bob Heatly** passed away in April. Bob was recruited onto the faculty in 1978 by then Head of the School John Bryant, to lead our design studios and specifically the upper level Competitions Studio. Working with both undergraduate and graduate students, Bob's mentorship yielded over 100 competition wins for OSU

in national and international competitions such as the Paris Prize and the Van Alen. Bob was an accomplished architect and artist as well, designing many projects in partnership with colleague Jim Knight, and creating thousands of original artworks in acrylic paint and more recently, in digital media. Bob experimented, always, and with passion.



Alumni News

If you are planning to attend the A' 22 Conference on Architecture in Chicago - come to our alumni reception! The event will be hosted by Professor Suzanne Bilbeisi and will take place on Thursday, June 23, 7pm-8:30pm, at Eckenhoff Saunders where alumnus Chris Nikkel, B Arch '05 is an Associate Principal. The firm has a roof terrace overlooking Millennium Park - fancy! Please RSVP at architecture@okstate.edu - hope to see you there!

Alumni - keep in touch! We're always glad to hear from you. Email with any comments to: suzanne.bilbeisi@okstate.edu.

In Memoriam

We are saddened to share news of the passing of two of our very special faculty members of the past:

Dr. Lester Boyer passed away in March of this year. Dr. Boyer was on the faculty at OSU in the AE program from 1970-1983, where he taught lighting. Subsequent to teaching in our program, he also taught at Texas A&M University, and served as Chair of the new Architecture Department in the College of Engineering at Kuwait University. During his career he authored nearly 100 technical publications in professional journals, and with OSU colleague Professor Walter Gronzik wrote *Earth Shelter Technology* in 1987.

▼ Dr. Les Boyer reviewing a student design, circa 1970's
 ► (clockwise) Professor Bob Heatly providing a critique in the Crow's Nest, circa 1980's; and recent paintings *Stairway to Heaven*; *Awnings of Grignon*; *Fusion of Primary Colors*

More information can be found at the following websites:

Dr. Les Boyer
www.montgomerysteward.com/obits

Professor Bob Heatly
www.stumpff.org/obituaries
 Also - Many of Bob's artworks can be seen on his Facebook page in the photos section



REFLECTIONS

Hello!

The 2021-2022 academic year is complete! I am happy to share that at the OSU School of Architecture we powered through, calmly and steadily working together and helping one another make a success of another very unusual year. Our students are looking forward to a restful summer, but are excited to be able to travel (yes!) and engage fully with internships again!

It is my pleasure to bring this edition of the *Reflections* newsletter to you. Our theme for this issue of the Newsletter is "*Contributions & Dialogues, Exhibitions & Outreach, Engagement & Expansion.*" We hope to communicate some of the ways we are connecting the work we do at the School of Architecture to a broader audience, at several scales. This semester, this has taken the form of unique project assignments and client interactions, undergraduate research, and other enrichment activities that are a part of student life and learning at the School of Architecture today.

Enjoy the articles and information within this newsletter, and please do keep in touch with us here at the School. We are proud of our current students and of the accomplishments of our alumni!

S. Bilbeisi

Suzanne Bilbeisi, AIA

Centennial Professor and
 Head of the School of Architecture
suzanne.bilbeisi@okstate.edu

PS: To see examples of this semester's student work, check out our end of semester 'Virtual Open House' videos on social media!

Website: <https://ceat.okstate.edu/arch/>

Facebook: Oklahoma State University School of Architecture

Instagram: @OkStateArch

◀ Student Seth Gunkel with Professors Sarah Ra and Suzanne Bilbeisi examine their exhibit of the adaptive reuse phases of our very own DWR School of Architecture Building.



Alumnus Randy Kreie (M Arch '78) provided support for the Urban Studio NYC field trip. He notes: "It is rewarding to give back to the school that helped me achieve my goals. We must assist the next generation of architects in expanding their horizons by supporting these travel/study opportunities."

of the Society of Architectural Historians Conference in Jackson, Mississippi. Dr. Spector served as managing editor for the *Journal Architecture Philosophy* spring issue, and Professor Moh Bilbeisi wrote a paper that was published in the national Design Communication Association Journal.

Locally, Professor Moh Bilbeisi was invited to be a guest with the OSU Vice President for Research Dr. Kenneth Sewell's program "Research on Tap" hosted at the Iron Monk Brewery in Stillwater. Moh discussed the importance of drawing and graphic communication in every field, scientific and artistic. The program was a live broadcast and recorded at the brewery.

In May, a special gathering honoring Professors Seitsinger, Spector, and Homer was held at the Alumni Center for faculty, staff and friends. Combined, the efforts of these three represent 75 years of service to OSU. They will be missed.

Student News

This academic year we graduated a very large group of students:

25 Arch and one double major last Fall, and 21 Arch and 7 AEs this spring. Plus another double major this spring. That's a total of 55 graduates and 57 degrees in one academic year. Wow!

For this coming Fall we have accepted another large group into Professional School: 43 Architecture majors, and 22 in Architectural Engineering. Again, wow! Both of our degree programs are experiencing record growth.

Several years ago our School launched the 'Graduate Certificate in the Design of the Building Envelope' which is an avenue for students to examine in closer detail their Comprehensive Studio project while earning an advanced credential. Thus far 10 students have completed the program, studying the design implications of such things as the economic efficiency of envelope choices, code compliance of new materials such as eucalyptus wood, double roof techniques, internal vs. external shading, carbon footprint, post occupancy evaluations, and many other unique and noteworthy investigations.

◀ (Top) Professor Moh interviewed for the OSU VP Research on Tap series, March 2022; (Middle) The gathering at the Alumni Center honoring Seitsinger, Spector, and Homer; (Bottom) The Spring 2022 graduates!

OUR FRIENDS

We all need friends, right? The School of Architecture does too. The “Friends of the School of Architecture” campaign is a way for alumni to annually share their appreciation for the education received at the OSU School of Architecture, and help pave the way for the next generation of young professionals. A gift of \$1000 or more benefits student programs and allows us to enhance the daily operations of the school. A gift of \$5000 or more can support two student scholarships for an academic year. These are all very important gifts. A gift of greater than \$25,000 can support special projects or create a new endowment to assist the School as directed by the donor.

In this academic year, alumni giving funded the following:

- An additional \$30k in our special mid year scholarship program in January to assist students in distress, plus equipment stipends for incoming freshmen to help dismantle the barrier of initial studio costs;
- Sponsorship of field trip bus expenses - fourth year and second year studios toured their project sites in OKC/Tulsa and met with client reps, third year toured the WW Steel plant, and all were invited to an open tour of the new Dolese HQ in OKC;
- Assistance with the fifth year Urban Studio field trip to NYC!
- Support for graduation receptions honoring those who complete our degrees (yay!);
- And any number of moments when we’ve needed this or that to improve the quality of the experience for students in our school.

These are just a few of the many impacts of giving to the School of Architecture - THANK YOU!

In gifts for this academic year (since July 1, 2021), the following loyal and true alumni have provided their support for the School of Architecture, joining the ‘Friends of the School of Architecture.’

CORINTHIAN LEVEL, \$25,000+

Larry and Linda Kester
Randy and Valda Kreie
Bill and Patti Lundeen
Bill and Mindy Silk
Neal Willison



◀ The Fall fifth year field trip to NYC, supported by alumni.



MORE FRIENDS

IONIC LEVEL, \$5000+

Moh'd and Suzanne Bilbeisi
 Jerry and Renee Conduff
 Ken and Katherine Corbin
 FSB
 Virginia and Jim Hart
 Thom Maciula
 David and Kerri Powell

DORIC LEVEL, \$1000+

Marta Baumiller
 Tony and Julie Blatt
 Michael Boerger
 Dallas and Suzanne Branch
 Gene and Kari Brown
 Jack and Carol Corgan
 Mike and Sharon Damore
 Brian and Titi Fitzsimmons
 Steve and Jane Ford
 Patrick and Briar Glenn
 Ozge and Ozgur Inal
 Jim and Belinda Hasenbeck
 Sarah Holstedt
 Jenny Kelley
 Sterling Little
 Duane and Robin Mass
 Ko Makabe and Hui Min Liaw
 John and Trish Meek
 Steve and Phyllis O'Hara
 Julie and Ryan Roberts
 Bill Seider and Mandy Miller
 Richard and Sandra Skinner
 Jim and Cherie Turner
 Tom and Susie Wallace
 Keith and Katherine Yancey
 ACME Brick
 AIA Oklahoma
 Bell & McCoy Lighting
 US Stone Industries
 W&W AFCO Steel



Alumni friends may donate to any fund of their choosing to be noted as a Friend of the School of Architecture. Consider the following possibilities for your giving:

26-00550 Architecture Scholarship
 26-65100 'Friends of Architecture'
 26-86550 Study Abroad Scholarship
 26-88150 George Baumiller Prize
 26-98100 John Bryant Scholarship
 26-00380 Louis Bass Scholarship
 26-01380 O'Hara AE Program Fund
 26-99420 Alan Brunken Scholarship
 26-94600 Bilbeisi Prize for Sketching

Find these funds and more at osugiving.com - Your gifts of all scales are much appreciated!

► Donald W Reynolds School of Architecture Building west atrium

in France, the Netherlands, and England with Professors Jerry Stivers and Nathan Richardson (see cover image of this Newsletter), and 'Made in Italy' in Northern Italy and Spain with Professors Paolo Sanza and Awilda Rodriguez. We have waited two years to be able to incorporate travel/study abroad back into our curriculum - it is a degree requirement for Architecture majors. Needless to say, we are all ecstatic to be traveling again with students, but will remain vigilant and cautious. More on the adventures of our students and faculty will be posted this summer on our social media channels - stay tuned!

Faculty News

As shared in the Fall 2021 Newsletter, Carisa Ramming moved to the Dean's office to be a part of CEAT leadership as the Assistant Dean for Engagement and Inclusion. Thus, we opened a faculty search for a new Architectural Engineering Assistant Professor. Although we interviewed several strong candidates, we were unable to secure a hire. So, the search will restart this fall! The ideal candidate has a Master of AE or Civil Engineering, several years of professional experience, and a

professional license. Candidates should have a desire to engage with students (both architecture and AE), and have an area of scholarly interest. Knowledge of construction processes is a plus. For further information refer to the position description posted on our school's homepage, or contact Professor John Phillips, john.j.phillips@okstate.edu. We need your help locating a fantastic addition to our already fantastic AE teaching team!

Dr. Khaled Mansy assisted community efforts this spring in the relocation of refugees moving into the Stillwater area as part of the Federal Afghan Resettlement project. Dr. Mansy provided transportation and helped secure backpacks for K-12 students to support their transition to America. Thank you, Khaled, for going above and beyond to help others!

In March, Assistant Professors Sarah Ra and Keith Peiffer presented papers at the National Conference on the Beginning Design Student hosted by Ball State University in Indiana. Also this spring, Associate Professors Paolo Sanza and Awilda Rodriguez presented papers at the Southeast Section

meetings to serve as a sounding board when any issues arose. Further, her position included tracking metrics for our SoA DEI Strategic Plan adopted in December of 2020. We are happy to note that much progress has been made! Additionally, at the CEAT DEI Awards Banquet this spring several students were recognized for their contributions in making our school and college a better place. If you would like to assist our DEI initiatives at the School, for example in recruiting diverse students or supporting student scholarships, let us know! Email architecture@okstate.edu.

The AIAS Career Fair 2022 was a success! In February, 38 firms came to the Student Union Ballroom to meet and recruit our talented students for summer internships as well as for full time hires. We understand the need is great in the profession, and we thank all who came to interact with our student body! Internships are a vital partner in the process of developing future professionals.

Design Week 2022 occurred March 28-April 1, with the theme "ICONIC." Events included live music on the South Plaza, guest

speakers, various class vs class competitions, Pecha Kuchas, a truss competition, and the annual Honors + Awards program. The week was capped off by the Pig Roast on Friday night. It was our first fully in-person Design Week in two years, and it felt great.

OSU has a special program initiated by former First Cowgirl Anne Hargis - it is known as P3, "Pete's Pet Posse." This spring a first year Architecture student requested that we host a P3 team in our school.. why not? Little 'Charlie' and his human Patti began making regular visits in our own John Rex Cunningham Architecture Library. Fun!



Travel/Study Abroad is ON! This summer we have 36 students traveling with our faculty in two distinct program offerings: 'Europe: Civic and Sacred'

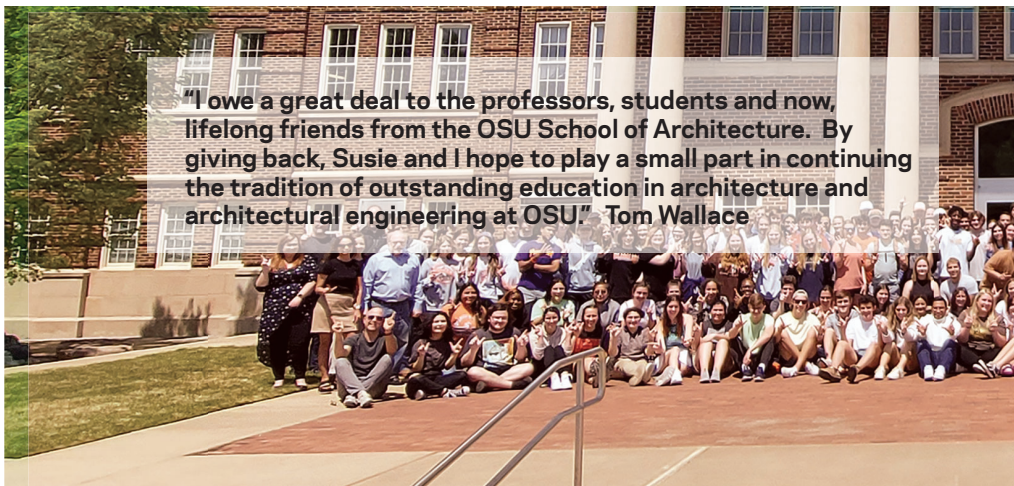


Please give! Join your fellow alumni in becoming a Friend of the School of Architecture and show your support of our students and programs this coming academic year. Thank you!

ALUMNI ENGAGEMENT

For the past 40 years alumnus **Tom Wallace**, M ArchE 1980, has remained in close contact with the School of Architecture where he often found himself serving on juries of student work, participating in the Professional Advisory Council, or attending events as varied as alumni receptions with program accreditors to Fall Tailgates. For Tom, these moments of connection to the School of Architecture were all an important part of his sense of duty to give back.

This sensibility extended to the fundraising aspect of the life of the School. When the School received the Donald W. Reynolds Foundation gift to re-envision the physical facility of the Architecture Building, Tom and Susie Wallace made a major gift to the required matching funds program. They were also substantial contributors to the Professorship campaign when funds were needed to obtain the T. Boone Pickens match. This professorship was fully funded through a group effort, and supports the Centennial Chair held by Professor Suzanne Bilbeisi since 2013. The Discover Architecture workshop for high school students has long enjoyed the sponsorship of Wallace Engineering, helping the School recruit the best and brightest to our program. When his teacher and mentor Professor Louis Bass passed away in 2017, Tom spearheaded a campaign to honor him with a scholarship endowment for the top AE student entering Professional School each Fall. The Louis O. Bass Scholarship will remain in perpetuity as an asset of the school and a nod to an important teacher who impacted so many in our field. These examples are in addition to the annual gifts Tom and Susie Wallace provide to a number of programs within the School that need financial support.



NEWS

School News

Field Trips! Thankfully we were allowed to get out and stretch our legs this spring, visiting studio project sites, historical monuments, product manufacturing plants, and in an all-school open field trip for a very special tour of the new Dolese headquarters in OKC. Thanks to alumna Suzanne Branch (B Arch '93) for orchestrating this tour, to give our students the opportunity to see firsthand the quality of the concrete and the special lighting effects of the project - a Saturday evening field trip, a first for the School!

The School of Architecture hosted four Guest Lecture Series events with distinguished speakers this Spring. The series included: architect and professor Chris Cornelius of the University of New Mexico; architect Rob Narracci of Pelli Clarke & Partners in New Haven; architect and alumnus Eric Hoffman of Patterhn-Ives, St. Louis; and architect and professor David Brown of the University of Illinois, Chicago. All events are free and open to the public, and recordings are also available on our OStateTV channel.

Our coffee sponsorship program, wherein professional firms support free coffee for the students for one month - is still going strong. The coffee cart resides just outside the Cunningham Architecture Library and the Jack and Carol Corgan Auditorium, which is very handy! For a modest fee, firms support the purchase of K-Cups and our students enjoy free coffee! The Spring 2022 coffee sponsors were Blatt Architects, AHMM, First Commercial Management, and DLR Group. Thank you! In exchange for the sponsorships, firms are recognized on our school's info TVs, and can place firm swag on the coffee cart. If your firm would like more info, email architecture@okstate.edu.

This academic year the school hired its first ever Diversity, Equity, and Inclusion Liaison; our liaison is a graduate student in health sciences. Her role was to arrange for special activities and events celebrating different cultures and groups, and to ensure that students were aware of opportunities to further engage with a wide variety of groups on campus. She also attended all student organization

ALUMNI LEGACY

Alumnus **Fred Chadsey** graduated with his B Arch in 1960, after four years of serving in Korea. During his career he founded Chadsey Architects, with offices in Tulsa and Kansas City. In retirement, Fred focused his attention on sailing, but circled back to his roots at OSU Architecture when thinking of his estate plans. Fred assigned the OSU School of Architecture as a partial beneficiary on his life insurance policy. Wanting to see an impact during his lifetime however, three years ago he provided a gift of \$25k to award in scholarships supporting Native American students in the School of Architecture. Those awards were made and assisted 18 students in their path to the degree. In late November, 2021, Fred Chadsey passed away at the age of 90. His estate gift will continue to support students with scholarships in perpetuity, through the Chadsey Family Scholarship endowment.

Alumnus **Thom Campbell**, B ArchE 1990, recently established an estate plan intended to support the Architectural Engineering program. This first step was important to Thom and his wife Leslie, to know that their legacy will create a lasting impact for the OSU Architectural Engineering program. Notes Thom, "The School of Architecture provided me a great foundation for my career and continues to do the same for so many. I am excited to support the future of the School. I encourage others to consider doing so as well."

If you want to know more about ways to give, or about developing or documenting an estate plan with the OSU School of Architecture in mind, please contact our OSU Foundations liaison Jill Johnson at jjohnson@osugiving.com - Thank you!



COMPETITION SUCCESS: CONNECTIONS

Seung Ra Associate Professor of Architecture

Sarah Ra Assistant Professor of Architecture

The Spring Critical Mass Studio of seven fourth and fifth year architecture students was awarded THIRD PLACE in the international Jeongnam Province Design Competition!* The open-ended call for proposals was focused on ideas for reuse of an existing urban site in Jeongnam, a city in South Korea. The studio's design submission, titled "Jeongnam Citizen Square", proposed an Urban Food Hub in response to three key concepts: Connection, Exchange, and Cycles. The Hub's primary functions, a pedestrian bridgeway and hydroponic farm, create the framework for exchange of food, energy, and knowledge, and provide a unique contemporary intervention for Jeongnam Province. The public pedestrian bridgeway restores the lack of connection to the existing southern public parks, squares, and gardens. To further blend the site with its surroundings, tiered seating within the site provides gathering while facing outward to the city and mountainscape. The farm component is a self-sufficient, surplus-producing unit, that provides a new foodscape of public spaces and plazas to activate citizens' awareness of the food and energy cycle.

The design is also a prototype for facilitating exchange through providing an interactive framework for the growing, selling, and distribution of food, as well as harvesting water and energy. Spaces are provided for the community to shop, sample, and interact with local growers. This ecological infrastructure provides a symbiotic relationship between food and energy sources and citizen consumers.

Natural cycles are enhanced through implementing water recycling and harvesting from the adjacent retention pond to interior food production, while providing opportunities for solar energy generation to optimize urban metabolism. A collection of bio ponds serves as gray water and storm water run-off collectors to source water for the agricultural interior functions. Inside, a hydroponic system encourages plants within vertical farms and greenhouses to grow strong and healthy. Within this system, urban dwellers are able to learn more about the process of farm to table.

Through focusing on urban and architectural typologies which integrate energy, water, and food systems, the team was able to create critical synergies. The project seeks to build an alternative public space by rethinking food and energy cycles and recalibrating them to foster new possibilities for urban living.

FACULTY MEMBER FOR 20 YEARS: JEANNE HOMER

Jeanne has taught design studio courses across the curriculum but most importantly she has been a staple in the Comprehensive Design Studio, continuing its traditions and inspiring new innovations. She also regularly taught the Architecture and Society history course and taught and/or led the Architecture Summer European Study Program over multiple summers. Jeanne says that she has "learned a lot in her time at OSU and is proud of her contributions to the School". She has contributed her strengths of practical analysis, design thinking from a broad perspective, and logistics to help her anticipate student needs and inspire creative and integrated student learning. Her courses emphasized a variety of human experiences, sustainability, and the integration of systems.

Jeanne often worked in an interdisciplinary manner, leading over a dozen successful interdisciplinary activities including grants, papers, and competition submissions. Her most recent interdisciplinary experience involved her role on the OSU Fire Council, where she served as chair and connected with faculty and staff across the university system. This connection led to the development of her final Comprehensive Design Studio project, a Fire Station in Soweto, near Johannesburg, South Africa that served informal settlements. Faculty and students interacted with a client in the city of Johannesburg who oversees fire station design in this area and leads a program that trains local teens to serve as fire fighters. Jeanne integrated interdepartmental activities during studio in which our students interact with fire protection and construction management students. Through a NIST grant, she created an educational video on egress design in collaboration with a Fire Protection faculty member. The video has been viewed over 40,000 times worldwide and is available in several formats. Last summer, Jeanne taught three plan review classes at the National Fire Academy.

Jeanne is proud of her many recognitions including an International Education Faculty Excellence Award at Oklahoma State for her teaching, service, and scholarship related to study abroad. She has continued a small practice in Stillwater, designing several houses and assisting with some community projects. Jeanne looks forward to being in Chicago with family and at her new position as Senior Architecture Education Specialist at the American Institute of Steel Construction, headquartered in downtown Chicago.

◀ (Top) Randy Seitsinger and Jeanne Homer flank the Europe 2015 group in Paris;
(Bottom) Jeanne Homer with her final Third Year Studio class, April 2022.

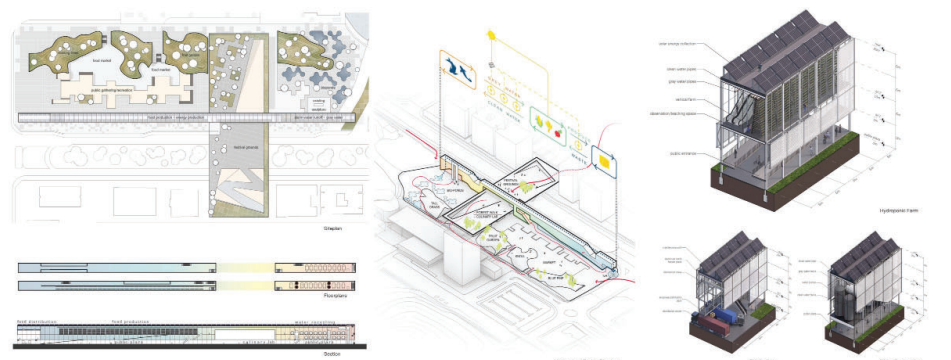


URBAN FOOD PORT

International Design Competition for the Jeonnam Civic Square

The essence of an urban food port is to create a vibrant, green, and healthy environment for the community. The Urban Food Port is a multi-functional building that will serve as a central hub for the community, providing a space for people to gather, work, and play. The building will be designed to be sustainable, energy-efficient, and accessible to all. It will also feature a large outdoor area for people to enjoy the outdoors and connect with nature. The Urban Food Port will be a landmark building in the Jeonnam Civic Square, and it will be a source of pride for the community.

The Urban Food Port will be a landmark building in the Jeonnam Civic Square, and it will be a source of pride for the community. It will be a multi-functional building that will serve as a central hub for the community, providing a space for people to gather, work, and play. The building will be designed to be sustainable, energy-efficient, and accessible to all. It will also feature a large outdoor area for people to enjoy the outdoors and connect with nature.



▲ The Third Place Competition submission for the Jeonnam Citizen's Square Competition by Delaney Cole, Seth Gunkel, Wes Kinsey, Mike Oppedisano, Grace Rykard, Fabricio Serrano, and Matt Walker.

* The top four winning entries will proceed to a second round of design and judging in the coming months.

THE STEAM ENGINE

Tom Spector Professor of Architecture

Keith Peiffer Assistant Professor of Architecture

John Phillips Professor of Architectural Engineering

Khaled Mansy Professor of Architectural Engineering

STEAM Engine OKC seeks to help “launch the next generation of critical-thinkers, creative problem-solvers, makers, doers, innovators and entrepreneurs” through educational enrichment programs in Science, Technology, Engineering, Arts, and Mathematics. This non-profit organization is the brainchild of a 2012 graduate of the OSU School of Architecture, Morgan Robberson Jones, who saw a need to complement traditional education with teaching 21st century skills to youth, and in particular children 8-13 years of age. The organization combines skills development with family and community engagement and educator professional development.

The School of Architecture has demonstrated an abiding interest in encouraging STEAM skills in both elementary and high school students with its longstanding outreach programs. The School’s ASTEK program, which teaches fifth-graders about architecture, is a nationally-recognized student-initiated program. Summer programs, such as Discover Architecture for high school students and other CEAT camps for 5th grade-12th grade students, introduce young minds to a variety of architecture and engineering concepts.

The convergence of the STEAM Engine’s mission with the School of Architecture’s support of STEAM education created an ideal project for the Comprehensive Design studio this semester. This studio in particular has always encouraged students to search for a synthesis between artistic aims and technological means. To address STEAM Engine’s desire for a new facility to support its pedagogical aims, our students considered ways to create a unique STEAM learning environment for children. Student proposals explored creative ways to “soften” typical STEAM facility design elements, engage children’s curiosity and imagination, and use the building as a teaching tool. Through technical exercises like drawing a wall section, conducting energy and daylighting analysis, and selecting materials, students began to translate these goals into an integrated building design. Student Jacey Watson earned the top honors in the studio for her proposal (shown right), plus the ‘Golden T-Square’ award from Dr. Tom Spector in the Management course for the most expensive building!

► Jacey Watson’s proposal for the STEAM Engine in Edmond, OK, inspired by the movie ‘Big Hero 6’



FACULTY MEMBER FOR 21 YEARS: TOM SPECTOR

Before coming to OSU, Tom graduated from Georgia Tech and practiced in his home region in North Georgia. He then moved to California in the early 1990s to pursue his dream of a Ph.D in architecture at the University of California, Berkeley, which he completed in 2000. Tom was hired to begin in the fall of 2001 to replace longtime Professor Bill Haire in teaching the practice and project management courses and in design studio. Tom brought a specialty in design ethics to the curriculum, and has since published widely on this topic, including two books. *The Ethical Architect* was published in 2001 and *Architecture and the Public Good* was published in 2021. During his time at OSU, Tom also became known as an expert on architectural writing. The book he co-wrote on the subject, *How Architects Write*, has gone into two editions. He originated and for the last decade, has been the managing editor for the journal *Architecture Philosophy*, which has become the most highly referenced journal in the field of the philosophy of architecture.

At the School Tom quickly settled in to teaching Comprehensive Design studio to fourth year Architecture majors and fifth year Architectural Engineering students. Tom is especially passionate about the importance of the wall section drawing: He made “wall section day” an annual event in that studio. He was integral to many of the changes the studio has seen over the last two decades to keep up with the changing demands of practice and was part of the team that won the 2004 NCARB Prize for going above and beyond accreditation requirements in that course. He helped steward the studio into becoming increasingly BIM-based and performance-based over the years, as such imperatives as carbon footprint have increasingly informed building design decisions. The teaching team’s effort in addressing climate change issues was recognized in 2020 with an ACSA Course Development Prize. Tom is especially proud of having won a University award in 2021 for excellence in inclusivity. He firmly believes in the importance of working towards greater diversity and inclusivity in the academy and profession.

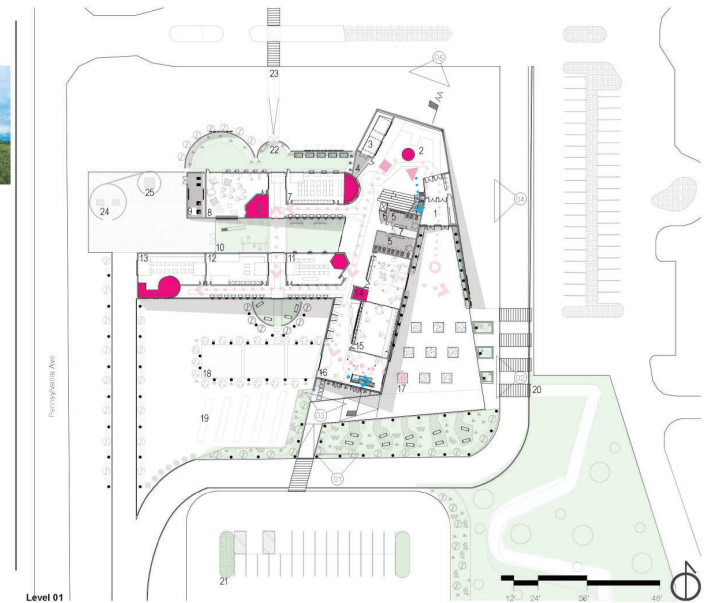
In retirement, Tom will continue to live in Oklahoma City with his husband Shawn, manage his apartment buildings there, and hopes to spend time each year in Italy. He is grateful for both the delightful and hard-working students who made teaching at the School of Architecture a yearly pleasure as well as for the always friendly and supportive colleagues on the faculty which he will miss very much.

► Professor Tom Spector lavishes his attention on a Comprehensive Studio student’s wall section

FLOOR PLANS



1. Entry Lobby
2. Gathering Space
3. Library
4. Storage
5. Restrooms
6. Mech | Storage
7. Teaching Kitchen
8. Art Studio
9. Mechanical Room
10. Outdoor Courtyard
11. Chemistry Lab
12. Woodshop
13. Woodworking Lab
14. Robot Lab
15. Computer Lab
16. Robot Testing Space
17. Robot Fighting Area
18. Robot Practice Space
19. Biowales
20. Proposed Playspace
21. New Parking
22. Outdoor Breakout Space
23. Proposed Connection to North Plot
24. Trash Enclosure
25. Transformer



ENERGY & ARCH

Khaled Mansy Professor of Architectural Engineering

John Phillips Professor of Architectural Engineering

Tom Spector Professor of Architecture

Keith Peiffer Assistant Professor of Architecture

Since 'Architecture 2030' energy use intensity (EUI) target values have been adopted by the AIA, meeting the 2022 target EUI was set as the performance goal for the Comprehensive Design studio. As students developed their proposals, they evaluated their projects using the Revit plug-in 'CoveTool' during schematic design, and later using 'eQuest' during design development. Assignments during schematic design included improving daylight performance, reducing energy use intensity, and reducing carbon footprint. During design development, the focus was the optimization of envelope performance where students tested their initial design proposal in the daylighting lab, as well as through hourly calculations of the cooling load. During the wall section review workshop, students interacted with professional architects and engineers and received further feedback on their envelope design.

New this year, the Comprehensive Studio was provided with a grant from the Renewable and Innovative Sustainable Energy (RAISE) initiative sponsored by the OSU School of Electrical and Computer Engineering to reward students whose projects excelled at meeting measurable goals in sustainability. RAISE awards totaling \$4,500 in comprehensive studio were given in four categories: most efficient building, deepest energy savings by design, closest to net zero energy, and best use of daylight. The most efficient building was awarded to the smallest building meeting the program areas. The deepest energy savings by design was awarded to the highest energy saving by design only (excluding improved systems) as compared to the building's Standard Reference Design as defined by the International Energy Conservation Code (IECC 2021). The closest to net zero energy was awarded to the lowest site energy use intensity (EUI) including the on-site electric power generation using sustainable technologies such as Photovoltaic panels. And finally, the best use of daylight was awarded to the highest Spatial Daylight Autonomy (sDA) with the lowest possible visual glare as measured by the Annual Solar Exposure (ASE). All very advanced analyses!

Student work will be showcased in a RAISE exhibit during the summer on the Stillwater campus and in OKC at the Hamm Institute for American Energy.

▶ A selection of Jacey Watson's energy performance analysis

in Pei's office Seitsinger worked on a variety of projects including a Group Divisional Headquarters for IBM in Somers, New York, the Pitney Bowes Corporation Corporate Headquarters in New Haven, Connecticut, a new transportation center at JFK International Airport in New York City, an addition to the JFK Presidential Library in Boston, and several speculative office buildings in Washington DC and New York. Randy also spent one year in Chicago working for Lohan Associates on projects in Chicago, Minneapolis, and Indianapolis.

Seitsinger is an accomplished painter, and painting has always been an important way for him to communicate and refine his thoughts on architecture. In terms of next steps, Randy and his wife Associate Professor Jeanne Homer are moving back to Chicago, and he will focus his energy on full-time painting in retirement – at least when he's not fishing or enjoying family! He also plans on traveling widely with sketchbook in hand. Bon Voyage, Randy!



▲ Chicago Wabash, 2021, oil painting by Randy Seitsinger

SERVING CEAT 35 YEARS: RANDY SEITSINGER

Senior Associate Dean Randy Seitsinger is retiring from OSU as one of only ten faculty in the history of the School of Architecture to serve 30 or more years. Seitsinger, a 1982 OSU Master of Architecture graduate, joined the School of Architecture as a faculty member in 1987, and was named Head of the School in 1995. He served as School Head for twenty-one years until he was appointed Associate Dean of Academic Affairs in the College of Engineering, Architecture and Technology in 2016. Over his long career with the School of Architecture, Seitsinger taught in the Design Studios, the Systems and Materials course, he created a History of Medieval Architecture course, and he led many architecture-focused study abroad trips to France and Italy. In 2014, Randy was awarded the AIA Oklahoma Award for Outstanding Educational Contributions for his many years of leadership in architectural education.

Randy is especially proud of his service as the Head of the School of Architecture and his role in leading faculty and students to success. During his tenure as Head, no less than twenty-five faculty were hired, ten of whom still teach at OSU today. Multiple successful accreditation visits for both NAAB and ABET were carried out under his leadership, and the curriculum modified at least every five years. Randy's door was always open to both faculty and students to hear a new idea or negotiate a concern.

Most importantly for the School, Randy led the efforts to secure \$16M in funding for the Donald W. Reynolds School of Architecture Building and was integrally involved in its design. The project received an AIA Oklahoma Honor Award in 2012. As the Associate Dean of Academic Affairs for CEAT, he provided leadership to all academic programs in the college, and, further capitalizing on his architectural skills, coordinated the design and renovation of Engineering North and South, and the design and realization of ENDEAVOR as a one-of-a-kind undergraduate interdisciplinary lab facility. He is a Fellow of the AIA, and a past-president of the AIA Oklahoma Board of Directors.

After graduation and following a post-graduation one-year European "grand tour", Seitsinger started his professional career in the office of I. M. Pei & Partners in New York City. His four years at this internationally acclaimed firm honed his design philosophy which was born at OSU and refined during his European travels. While

CARBON FOOTPRINT

Heating Load: Heating load remains higher. To resolve this issue, we will increase the size of openings and remove some of the glazing devices.

Lighting: To reduce the lighting load we will look into better incorporated diffused light wells that can be incorporated with the HVAC coordination with the space. Having operable door to the exterior will also help increase the natural light filtering through.



AIA Framework for Design Excellence



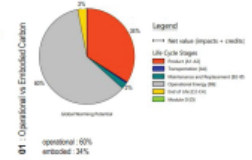
Model A: 100% Code Compliant



Model B: Improved Design



Model C: Improved Design + Equipment



Category	Value
Embodied Carbon	100.00
Operational Carbon	100.00
Total Carbon	200.00

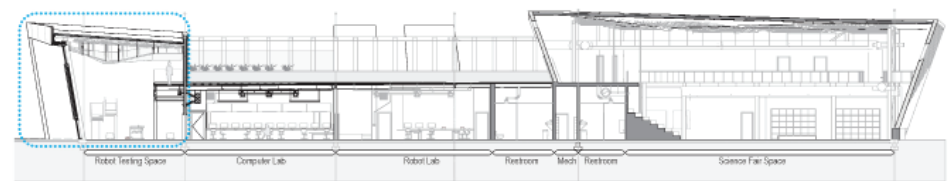
183.61 global warming potential per SF

DAYLIGHTING



Light Fixture ID	Material	Power (Watts)	Area (sq ft)	Footcandle	Footcandle/ft²
1	LED Panel	15	10	1.5	0.15
2	LED Panel	15	10	1.5	0.15
3	LED Panel	15	10	1.5	0.15
4	LED Panel	15	10	1.5	0.15
5	LED Panel	15	10	1.5	0.15
6	LED Panel	15	10	1.5	0.15
7	LED Panel	15	10	1.5	0.15
8	LED Panel	15	10	1.5	0.15
9	LED Panel	15	10	1.5	0.15
10	LED Panel	15	10	1.5	0.15

SECTION



Section AA

Focus Space R & U Values

Material	R-Value	ASHRAE T1
Outside Air	0.25	ASHRAE T1
Roof Membrane ECRPI	0.33	ASHRAE T4
Vapor Barrier Permeable Full	0.05	ASHRAE T4
4" Rigid Insulation Polyiso	25.0	ASHRAE T4
Inside Air	0.92	ASHRAE T1
R-Value	25.6	
U-Value	0.039 < 0.039 OK	

Material	R-Value	ASHRAE T1
Inside Air	0.92	ASHRAE T1
1/2" Gypsum Board	0.05	ASHRAE T4
6" Rigid Insulation Polyiso	15.0	ASHRAE T4
1" Air Cavity	0.9	ASHRAE T4
5" Concrete	0.9	ASHRAE T1
Tensar20 Floor Finish	0.08	ASHRAE T1
Insulate Floor Finish	0.02	ASHRAE T1
Slab On Grade	0.05	ASHRAE T4
R-Value	1.56	
U-Value	0.64 < 0.73 OK	

Material	R-Value	ASHRAE T1
Outside Air	0.25	ASHRAE T1
2 1/2" Concrete FWSK Panel	0.25	ASHRAE T4
1" Air Cavity	0.9	ASHRAE T4
2" Rigid Insulation Polyiso	15.0	ASHRAE T4
Vapor Barrier Permeable Full	0.05	ASHRAE T4
1/2" Sheathing Gypsum	0.05	ASHRAE T4
6" Metal Stud 1" @ 24"	0.73	ASHRAE T4
6" Rigid Insulation Polyiso	0.42	ASHRAE T4
1/2" Gypsum Board	0.05	ASHRAE T4
Inside Air	0.92	ASHRAE T1
R-Value	49.89	
U-Value	0.02014 < 0.054 OK	

Material	R-Value	ASHRAE T1
Outside Air	0.25	ASHRAE T1
2 1/2" Metal Panel	1.0	ASHRAE T4
1" Air Cavity	0.9	ASHRAE T4
2" Rigid Insulation Polyiso	15.0	ASHRAE T4
Vapor Barrier Permeable Full	0.05	ASHRAE T4
1/2" Sheathing Gypsum	0.05	ASHRAE T4
6" Metal Stud 1" @ 24"	0.73	ASHRAE T4
6" Rigid Insulation Polyiso	7.0	ASHRAE T4
1/2" Gypsum Board	0.05	ASHRAE T4
Inside Air	0.92	ASHRAE T1
R-Value	37.2	
U-Value	0.0269 < 0.054 OK	

LIFTING A VEIL

Keith Peiffer Assistant Professor of Architecture

We are often unaware of others' experience of the world and their interactions with it, creating a veil of ignorance. We then project our experience on those around us without realizing how our perspective has been shaped by many things that we take for granted. As this is true more broadly in culture, its influence is felt in educational settings as well, in which predominantly White institutions can be unaware of all that is lost through the omission of diverse viewpoints and narratives.

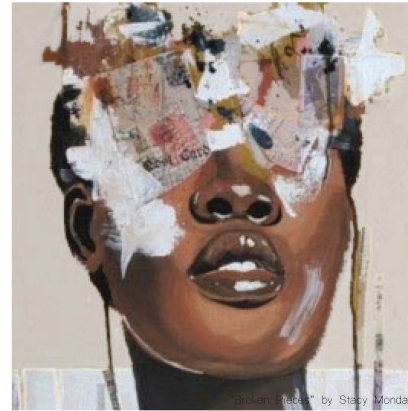
With this in mind, a recent exhibition at the School of Architecture documented part of Keith Peiffer's considerations of the relationship between race, particularly for African Americans, and architecture. With the support of the Knight Family Fellowship, Keith traveled to central Alabama during the summer of 2021 to visit Tuskegee University's campus as well as significant civil rights sites in Montgomery, Birmingham, and Selma. His goal was to broaden his own network of colleagues to enrich his pedagogical approach, as well as to fill in gaps in his own education about history.

Keith felt it was important to share information and his reflections from the trip with the School of Architecture and the broader university. The resulting exhibition, titled "Lifting a Veil," focused on the work of Robert R. Taylor, the first accredited Black architect in the US, as well as significant civil rights sites in Alabama. A series of diptychs reflected on the legacy of racial segregation, slavery, and the civil rights movement and their impact on architecture and urbanism. Visitors were also invited to interact with a series of books and pamphlets sharing information, as well as engage with resources available to take with them for further study.

The goal of the exhibit was to highlight available research not commonly covered in architectural education. In particular, the exhibition highlighted the work of an important Black architect and the impressive design-build approach pioneered by Tuskegee at the turn of the 20th century, and shared the perspectives of Black architects and activists with visitors from across the university and Stillwater. Through learning about the experiences and contributions of our Black colleagues, we can engender empathy, which allows us to become better designers and citizens.

- The public exhibit created by Keith Peiffer and student assistant Cas Cluck opened in April.
- (Top) Diptychs lined the gallery walls, providing distinct comparisons for contemplation;
- (Bottom) Tables in the center of the exhibit offered resource materials for students.

CONCEPT



CONCEPT: IDENTITY

ERASURE OF IDENTITY

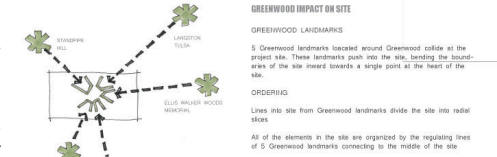
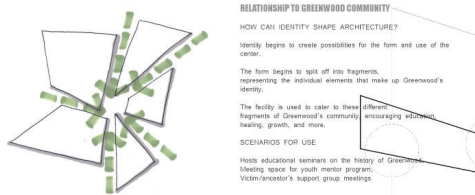
"The erasure of the urban landscape is the erasure of identity, culture, and people...new construction is often advertised as way for neighbourhoods to form or revitalize local identity." (Arch Daily)

The Tulsa Race Massacre and urbanization have erased a vital part of the identity of Greenwood by removing all physical reminders of the community.

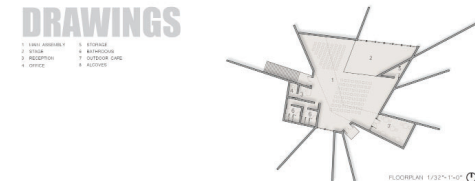
WHAT IS IDENTITY?

Identity is not one thing, it is the many things that make something unique.

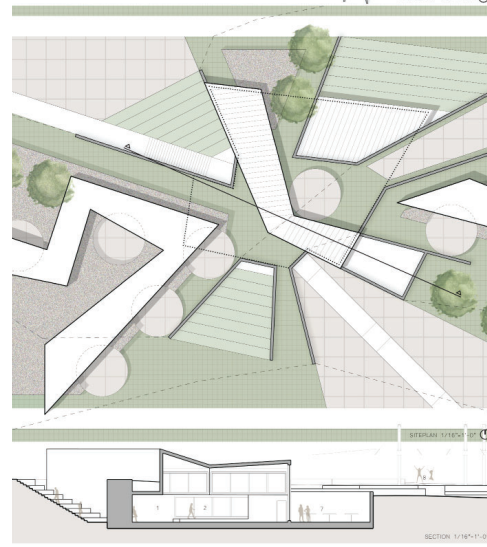
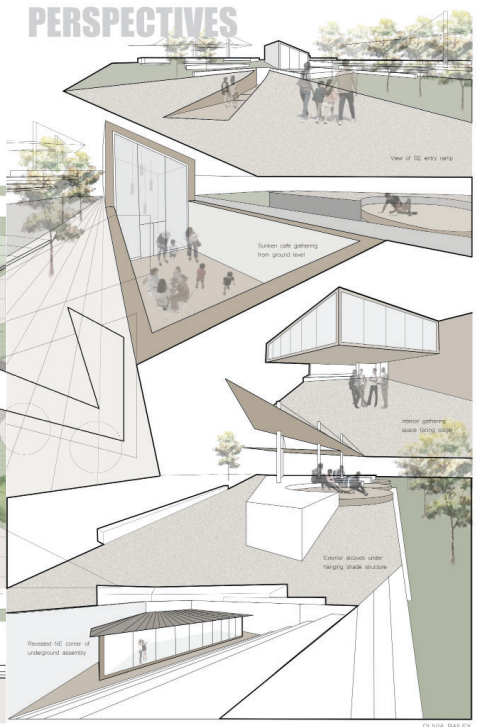
The identity of Greenwood cannot be embodied by one single thing. It can be represented by many things, many fragments that come together to form a whole.



DRAWINGS



PERSPECTIVES



DESIGN, TEST, BUILD

Paolo Sanza Associate Professor of Architecture

Mies van der Rohe once stated: "A chair is a very difficult object. A skyscraper is almost easier," and, it could be added, not as fun. Architects' fascination with designing furniture, specifically chairs, can be attributed to many factors including the notion of the architect not solely as the individual associated with building design but design as a whole. The possibility to work with new and alternative materials and engage with cutting-edge manufacturing technologies is also very satisfying, and comes at perhaps less risk than experimenting with a building design.

Capitalizing on the notion that architects are those individuals that can successfully surf multiple design disciplines, the spring third



STEEL REEL

Christina McCoy Assistant Professor of Architecture

The hum of construction vehicles, the meetings with contractors working out installation strategies, the gratification of rehabilitating a historic structure – sometimes the everyday details such as these in professional practice can seem far removed from the classroom. Yet, students are eager to learn about the application of the skills they are learning, and are energized by the stories they can glean from engineers “in the thick of things.” That’s where Steel Reel Comes in.

Steel Reel is a project in development by Assistant Professor Christina McCoy and funded by the American Institute of Steel Construction (AISC). Third year architecture students Cameron Evans and Isaac McCalip are assisting with the videography effort. She and her team are filming interviews with industry professionals sharing various experiences in their steel engineering career. The end result will be a collection of short videos, 5-8 minutes in length, available on AISC’s website as a teaching tool for instructors of steel design all over the country to use in conjunction with their lectures.

Topics include framing strategies, steel connection design, forensic engineering, engineer-fabricator collaboration, and many others. These interviews will relay real-world application of the topics students are learning, engaging them with the material. For example, in one video engineer Andrea Shear of Wiss, Janney, Elstner Associates, Inc. describes her chosen career path as a forensic engineer rehabilitating historic buildings in New York City. Andrea shares her personal interests in history, math, and metallurgy and describes how her career path allows her to pursue these interests through her work. In addition, Andrea promotes the reuse of historic buildings as “the first level of sustainability.” She humorously notes that she has discovered relics from the past as she explores older buildings, from a discarded newspaper to an underground tunnel.

Through the *Steel Reel* series, students will have the opportunity to hear the voices of working engineers who are passionate about their work. This kind of excitement is contagious – people solving problems and showing pride in their solutions. Stories such as Andrea’s will be used to open students’ eyes to opportunities within the structural engineering industry and make connections with the “real world.” *Steel Reel* will be available as an official AISC Teaching Tool this fall.

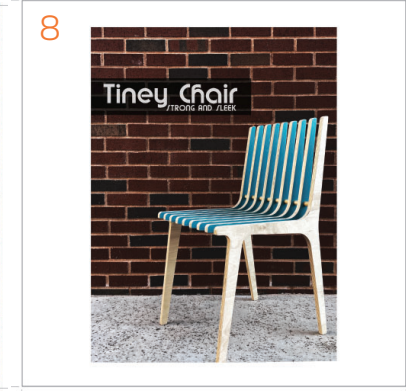
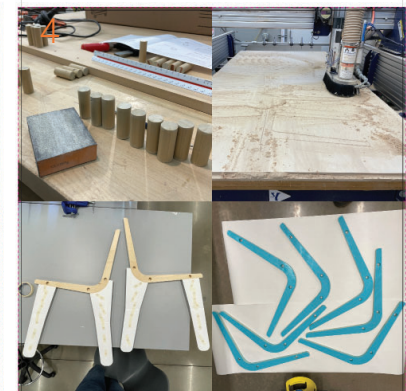
◀ (Top) Video clip of engineer Andrea Shear in production;

(Bottom) The interview process with Christina McCoy at the AISC Conference

...SIT DOWN & MARKET

year design-build studio expanded the typical hands-on experience by requiring students to create step-by-step assembly documents for an end user, and an advertising campaign to be featured in the likes of Domus and Abitare for their designed flat-pack plywood chair. Students were tasked with formulating an advertising slogan or tagline and using three distinctive representation techniques - line drawings, renderings, and photographs - to formulate a coherent and inspiring marketing package with the goal of engaging the imagination of potential buyers.

▼ (1) Tiney Chair concept, (2) Production drawings, (3) Cardboard full scale mock-up, (4) Production using the woodshop, (5) Flat-Pack design for shipping, (6) Assembly instructions for the end user, (7) & (8) Advertising campaign samples; by Molly Hoback and Jordan Hill.



A WESTERN TOWN

Jared Macken Assistant Professor of Architecture



On a Saturday morning this spring, fourteen architecture students took a field trip to the small town of Boley, Oklahoma as part of the elective class 'Legend of the Western Town.' The field trip took place 114 years after Booker T. Washington wrote an article extolling the vibrancy and cosmopolitan atmosphere of this "All Black Town," one of more than 50 that were founded in Oklahoma before the territory became a state. Washington, in his article, described Boley's main street as a dynamic space that had been constructed as a home and safe haven for and by "freed-men" of the Muscogee Creek Nation and other Black Americans fleeing racial discrimination in neighboring states. At the time, and in part because of Washington's article, Boley was a symbol of freedom even as the territory became a state and enacted segregation laws. While the town has declined over the years, the powerful ideology of the community has survived: to build a town and citizenry that demonstrated the ideals of freedom for all American citizens. The goal of the field trip was to piece together this fragmented yet important history and collect data that would help the students reconstruct an image of main street's architectural form in order to better understand Boley's cultural spaces.

During the visit students met with Henrietta Hicks, a long-time citizen of the town, who gave the tour and provided first person accounts of what it was like to live in Boley. When students returned to the classroom they combined the field research with historic photographs found in the Oklahoma Historical Society's digital archives. Using this data, they were able to piece together an axonometric drawing that recreates the collective space described by Washington. Today,

SEEING, THINKING, WRITING, DRAWING

*Creative Journeys -
Timeless Strategies for Traveling with Purpose*
by Nathan Richardson & Moh'd Bilbeisi, Kendall Hunt, 2022

Coming soon, a book co-authored and illustrated by two faculty who are masters in the art and science of graphic journaling! Moh'd Bilbeisi and Nathan Richardson have led and participated in creative travel programs with students and practitioners to dozens of locations around the world. This book is designed by and for these many travel experiences.

Creative Journeys expands upon the timeless and universal strategies for traveling with goals and purpose. It is written and illustrated as a resource for anyone involved with travel and creativity. Creative people aspire to travel well and often gain deep insight and experience while journeying. *Creative Journeys* includes histories, theories, concepts, and practices that will prepare a traveler for creative engagement.

The book is structured in three primary sections: Formulation, Action, and Reflection. Each section emphasizes distinct and complementary phases of creative travel. Fifteen chapters address topics such as motivation, mobility, observation, documentation, critical thinking, narration, and evaluation. Each section includes travel tips, exercises, discussion questions, worksheets, and charts to support and encourage creative exploration. These resources make *Creative Journeys* useful for independent travelers, students and faculty on travel-study programs, and creative professionals that want to make the most of their travel experiences.

The School of Architecture has long supported travel experience as a critical part of the education of future architects and engineers. With generous scholarship support from alumni and friends of the school, we continue to provide excellent education through travel experiences. Despite a two-year pause on travel, study abroad has resumed this summer with nearly forty students traveling to Europe. With many people at the school and beyond looking to reconnect with distant places, this book promises to support and advance the creative nature of one's journey.



CREATIVE JOURNEYS



TIMELESS STRATEGIES FOR TRAVELING WITH PURPOSE

NATHAN RICHARDSON & MOH'D BILBEISI

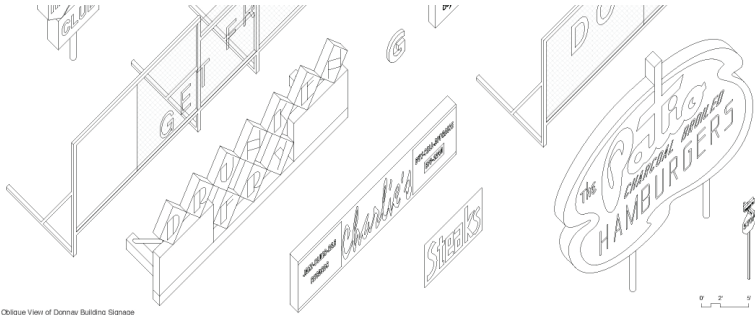


most of Boley's main street buildings no longer exist, this drawing is the best image available of the town in its original state. As such, the drawing became an important analytical artifact used to observe how individual structures of the main street connected to each other and formed Boley's cultural spaces.

This research is also a part of an article Dr. Macken wrote for the Spring/Summer 2022 edition of Oklahoma Humanities Magazine titled "The Architectural Code of Main Street." The article compares Boley's culturally significant main street with others from the state, including the remarkable yet lost "Deep Deuce" neighborhood of Oklahoma City, the courthouse square of Perry, and Paseo Arts District's meandering street. Each of these urban spaces utilizes slightly different architectural forms to create cultural landscapes that are significant at the state and national level. The article can be found at www.okhumanities.org/programs/magazine.



▲ Boley, OK circa 1905, and in reconstructed axonometric drawings created by students



Oblique View of Donray Building Signage



SUMMER FUN

This summer the School of Architecture, CEAT, and OSU have multiple outreach and engagement programs planned for students of all ages. These are all in-person experiences, yay! We can't wait to get back to interacting with young minds eager to learn what architects and architectural engineers do, and what a potential career in the building arts may look like. The School of Architecture offers:

DISCOVER ARCHITECTURE, for high school age, June 14-18
While this workshop is already completely full with 30 students enrolled, we need firm sponsors to help support the experience of this camp. If your firm would like to be a sponsor, please email Professor Bilbeisi! Sponsorships are \$500; firms will interact through a planned dinner with Professionals, and the firm's marketing materials will be included in the end of camp take home packet.

CEAT camps that the School of Architecture will participate in include (held in Stillwater unless otherwise noted):

ENGINEERING DISCOVERY, high school girls, June 27-July 1
Girls (and boys, if they want to join) are welcome to attend and learn engineering problem-solving and networking!

DISCOVERY DAYS, high school, July 8 (one of six Friday camps)
Students may sign up for one all of the Friday Discovery Days. The session focused on Arch/AE is July 8.

ENGINEERING EXPLORATION, middle school, July 6-July 8
Students will explore the engineering design process and complete daily challenges to promote creativity and problem-solving.

ARCHITECTURE EXPLORATION, middle school, with two sessions available. The Tulsa session is July 6-8, and the OKC session is July 19-21. *Professionals are needed as volunteers for these! Email Professor Bilbeisi if you would like to participate in this project.*

The OSU Alumni Association also offers an experience for legacies:

GRANDPARENT UNIVERSITY, for 7-14 year olds with their grandparents, in two sessions. The Architectural Engineering major will occur June 15-17; the Architecture major June 22-24. More information can be found at OrangeConnection.com.

◀ A 2019 Discover Architecture participant who is now a 3rd year student in our program!

UNDERGRADUATE RESEARCH: WHAT BUILDINGS SAY

Liam Vennerholm Third Year Architecture Major
Jared Macken Assistant Professor of Architecture

Working under the direction of Dr. Macken, Liam explored the ways that form and signage can communicate the use of a building to the general public. Writes Liam, "One specific avenue of communication I focused on was signage: a form of architectural communication that architects Robert Venturi and Denise Scott Brown originally researched in relation to the signage of the Las Vegas Strip. Their findings focus on how some buildings can have signage applied to them while others may use the shape of the building itself as a sign. I identified a building that exhibits characteristics of both types of signage: the Donnay Building in Oklahoma City. The Donnay Building is like a main street that has been packed onto one building; as such, it has many different kinds of businesses and people that call it home, and it readily communicates this eclecticism. The Donnay Building is beloved by the community it has fostered and has become an icon for that location."

GAMEDAY MAYHEM

Coleman Little Fourth Year Architecture Major
Keith Peiffer Assistant Professor of Architecture

To better understand the tailgating phenomena and its impact on public space, Coleman conducted a field study consisting of journaling and photographic documentation during Homecoming of 2021. Professor Peiffer mentored Coleman's analysis of the documentation, which revealed four repeating artifacts: trash, cornhole boards, ledges used as bars, and electricity generators. In response to these four categories, Coleman designed a series of specific interventions. This process used design as a research method to understand how we use space; treating an everyday event as the subject for an artistic intervention was especially helpful when considering gameday. His subtle, tactical interventions hope to provide a new way to experience the familiar. Within the context of tailgating at OSU, the proposed family of interventions speak to the inadequacy of existing infrastructure and systems on campus and the ways in which they are used on gamedays.

◀ (Top two) Analysis of the Donnay Building in OKC by Liam Vennerholm;
(Bottom two) OSU football game day issues and potential solutions by Coleman Little

DISCOVER ARCHITECTURE:
<https://ceat.okstate.edu/arch/discover-architecture.html>

CEAT CAMPS:
<https://ceat.okstate.edu/extension/professional-development/courses/stem/>



A Story of Two Timelines:

The School of Architecture and the Donald W. Reynolds School of Architecture Building

The School of Architecture was founded in 1909. Architectural Engineering was one of the first degree programs offered through the College of Mechanical Engineering. Over more than a century, OSU's School of Architecture has been producing graduates who have made a difference in the world. The building has been a place where students trained and made their mark in the field of architecture. This exhibit captures many of the milestones of our School's rich history. The top half of the timeline illustrates the history of the School of Architecture, faculty, students, awards, and student organizations.

The lower half of the timeline illustrates the history of the campus facility we now know as the Donald W. Reynolds School of Architecture Building. It was originally constructed in 1923, with the purpose of serving as a gymnasium and armory in support of the ROTC program. The building was the place where OSU students learned and grew. OSU constructed basketball courts, a gymnasium, and a pool. OSU students used the building for practices and for their social gatherings. When the ROTC program was cancelled in 1928, men's wrestling and football practices moved there. The first basketball team in the west met in the gym here and was also used as a general purpose recreation facility, with the armory function remaining in the west wing. In 1960, the Carter Center was constructed and the first art studio building. In the 1970s, the building was given to the School of Architecture and the first renovation occurred. The second renovation, to be complete soon, will be the third renovation and will be the Donald W. Reynolds School of Architecture Building.

This exhibit tells the story of an educational degree program, and a campus building. These are the things we treasure and are proud of. We are not just a building, we are a community. The building is not just a structure, but it is a place where we learn and grow. The building is a powerful tool for the teaching and learning of architecture!



LIVING HISTORY

The exhibit "A Story of Two Timelines" illustrates the parallel histories of the School of Architecture as a program of OSU, and the Armory/Gymnasium/Architecture Building as a campus asset. The two histories were joined in 1978 when the first renovation took place and the sense of community possible within our school was forever changed. The exhibit also details the adaptive reuse of three distinct original areas of the building: the south entry lobby, the second floor gym, and the pool in the east section. 'The Building' remains a powerful tool for the teaching and learning of architecture!