

**Oklahoma State University
School of Civil and Environmental Engineering
Concrete Canoe Special Edition Newsletter
Spring 2019**

MESSAGE FROM THE HEAD OF THE SCHOOL OF CIVIL AND ENVIRONMENTAL ENGINEERING



It's official – we won our regional competition and we are going on to Nationals!

A handwritten signature in black ink that reads 'Norb Delatte'.

Norb Delatte
Phone: 405 744 5190
Email: norb.delatte@okstate.edu

Here's our official invitation from ASCE:



April 16, 2019

Gregory Wilber, P.E., A.M.ASCE
Faculty Advisor
Oklahoma State University
Via e-mail: gregory.wilber@gmail.com

Dear Prof. Wilber:

Congratulations! Your student chapter's performance in your ASCE Student Conference Concrete Canoe Competition has earned this official invitation to participate in the 32nd Annual ASCE National Concrete Canoe Competition (NCCC) in Melbourne, FL. The NCCC will be hosted this year by Florida Institute of Technology, June 6-8, 2019.

The Mid-Continent ASCE Student Conference was held on April 12 and 13 in Norman, Oklahoma, on and near the campus of the University of Oklahoma. We won the concrete canoe competition, and we will be competing in the nationals. For more information on the competition and qualifying teams, see ASCE National Concrete Canoe Competition <https://www.asce.org/event/2019/concrete-canoe/>

The Display and Part the Team at the University of Oklahoma



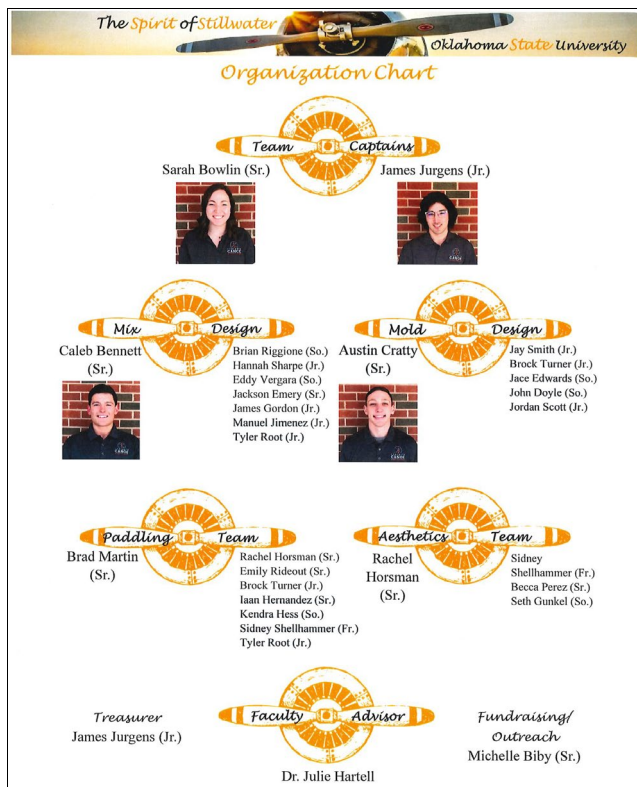
The Trophy



The Canoe and Team



Team Organization



Other Competition News

We also won the Concrete Bowling Ball Competition. And the steel bridge ALMOST carried the full test load... just the small matter of a bolt shear failure. Better luck next year.



KEEPING UP WITH THE PROGRAM

Do you want to get regular updates on the School? Join our OSU CIVE LinkedIn group
<https://www.linkedin.com/groups/12013094>

PLEASE SUPPORT THE TEAM


Your support to send our team to Nationals is greatly appreciated. Payment options -- Please note Fund #26-87100 OSU Concrete Canoe Team Fund or Fund #26-66000 CIVE on all gifts:

- Check, made out to Oklahoma State University Foundation -Mail to: OSU FOUNDATION, Attn: Jill Johnson, 400 S. Monroe, Stillwater, OK 74074
- Give online at OSUgiving.com/GiveNow (Search for Fund #26-87100 or #26-66000; Can be one-time or recurring gift)
- Call the OSU Foundation at (800) 622-4678

Please support the School of Civil and Environmental Engineering!




We are also still taking naming gifts for the Engineering North 2nd floor renovation



COLLEGE OF
**Engineering, Architecture
& Technology**

CIVIL & ENVIRONMENTAL ENGINEERING

Engineering North 2nd Floor Renovation



Naming Opportunities

School \$20M	Chair \$1M	Professorship \$500,000
Office Spaces		
School Head Office \$30,000	TA Office \$30,000	Student Org. Flex Space \$40,000
Advisor Office \$10,000	Visitor Faculty Office (3) \$10,000	Conference Room - Medium \$30,000
Staff Office (3) \$10,000	Faculty Office (21) \$10,000	Conference Room - Small \$20,000
Visiting Faculty Office (3) \$10,000	Program Coordinator Office (2) \$15,000	
Meeting Spaces		
Shared Conference \$100,000	Student Commons \$75,000	Visitor/Reception Area \$40,000
Flexible Seminar \$40,000	Faculty Commons \$25,000	Lactation Space \$10,000
	80-Person Classroom \$250,000	

How to Give

- Go to OSUgiving.com/GIVE
- Complete the secure, online form

For more information contact **Jill Johnson** at jjohnson@OSUgiving.com or 405-385-0733.