

CIBS Infrastructure – Compressor Load Stands

Hot-gas bypass load stand development

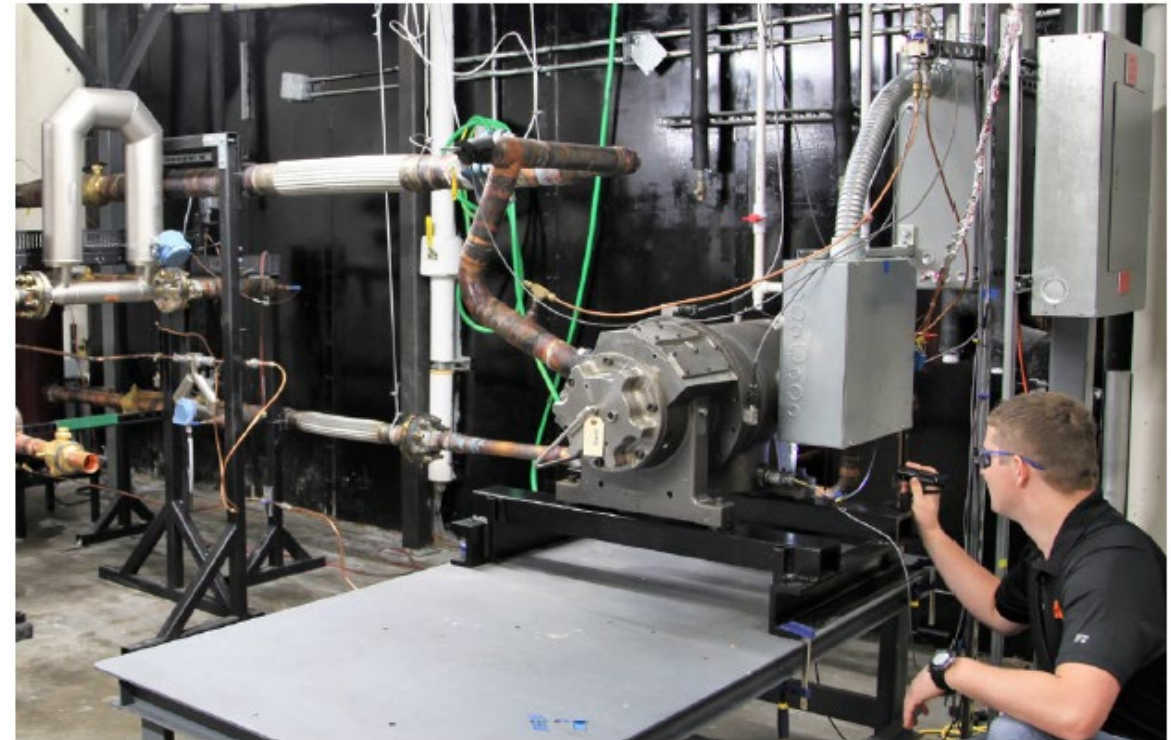
Two available load stand environments that are commissioned and comply with ASHRAE 23.1 testing standards

- Light-commercial load stand, 10-80 tons of refrigeration
- Fractional, less than 1 ton of refrigeration

Light-commercial stand includes novel features such as independent oil management, economization, and a high-capacity range



Fig: A compressor being tested on the light-commercial load stand at OSU



Funding: Mechanical and Aerospace Engineering, OSU; and Johnson Controls Intl.