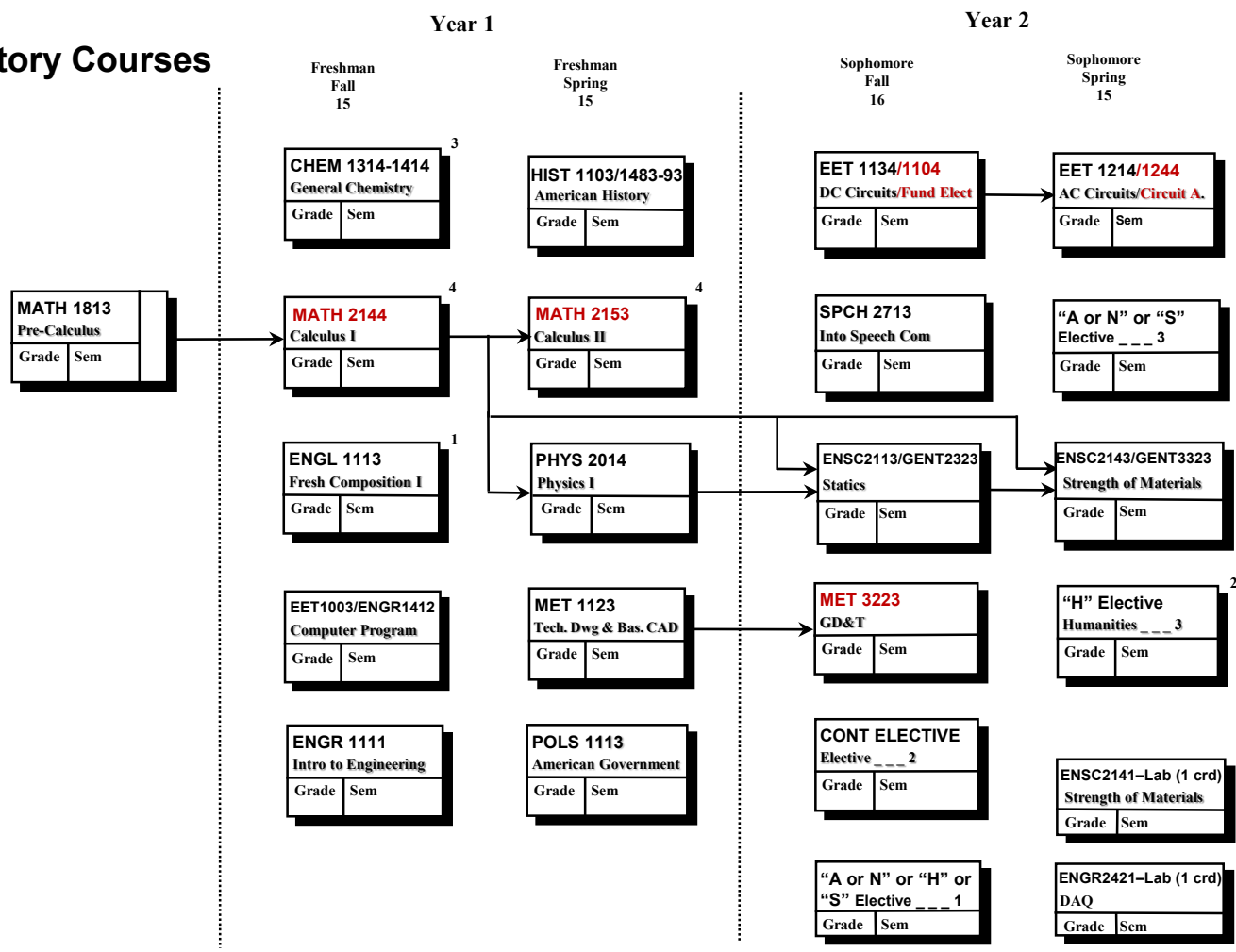


Name: _____
 Advisor: _____

College/Departmental Requirements
Mechanical Engineering Technology .

Preparatory Courses



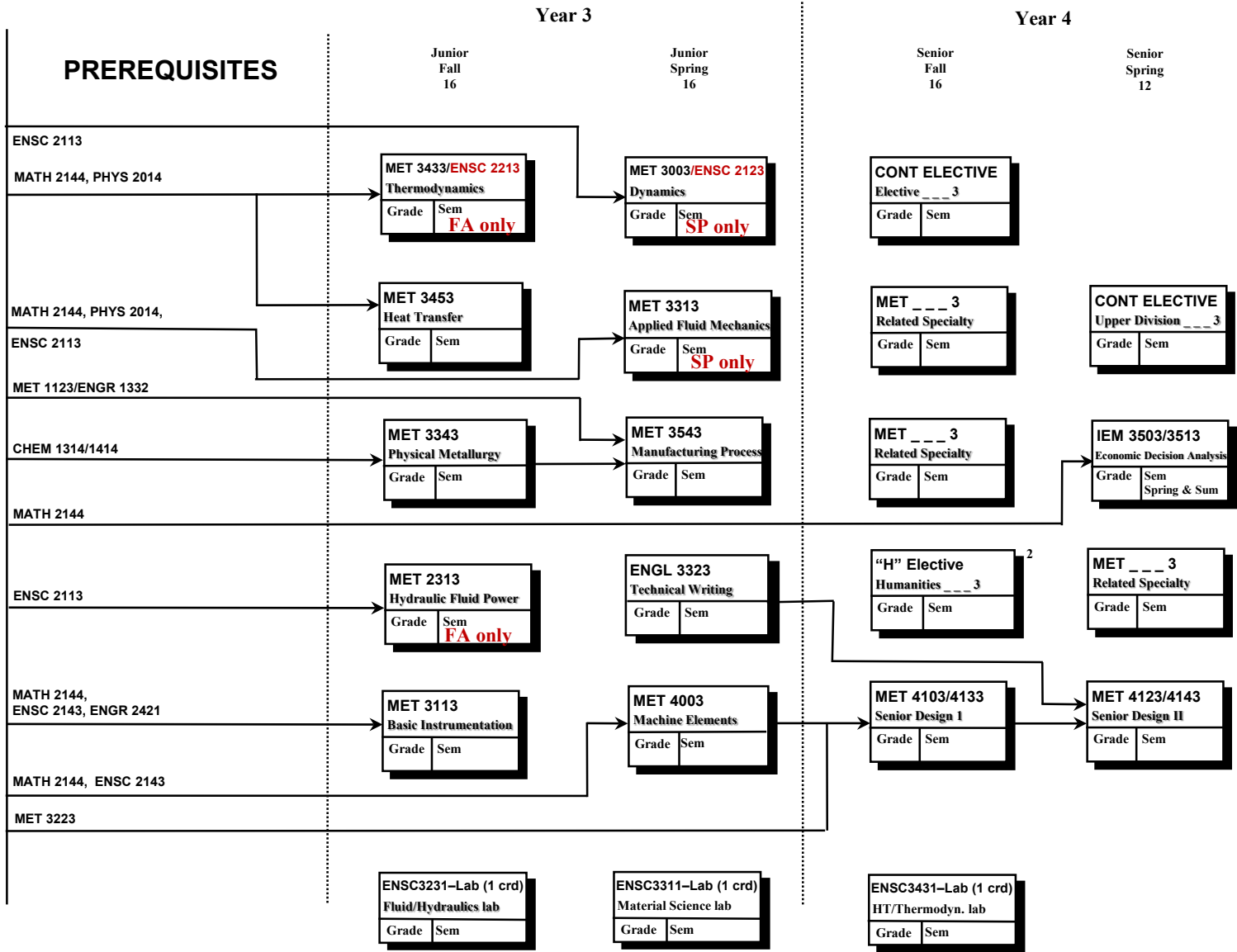
- A minimum average GPA of 2.00 is required in all courses with an engineering or engineering technology prefix.
- A grade of "C" or better is required in all analytical, science, engineering and engineering technology courses to graduate.
- NOTE: This flow chart is for planning purposes only. Students will be held responsible for degree requirements in effect at the time of matriculation (date at first enrollment) & any changes that are made, so long as these changes do not result in semester credit hours being added or do not delay graduation. (Academic Regulation 3.2)

1. Students with less than a "B" in ENGL 1113 or 1313 must take ENGL 1213 or 1413 and may not substitute ENGL 3323 for 1213. (Academic Regulation 3.5)
 2. At least 6 hours designated (H). Of these, 1 hr. must meet the International Dimension "I" and 1 hr. must meet the Diversity requirement "D".
 3. Select one course from CHEM 1215, 1314, 1414.
 4. ALEKS Exams for Mathematics Classes: Students are required to take an online examination using a system named ALEKS. The following website describes the exam, how to login and other details. Please read all of the website page before going to the link to the exam. Refer to the OSU Math Department website: <http://placement.okstate.edu/math>.
 5. A grade of 'C' or better is required in all courses with an analytical, natural science, engineering, or engineering technology prefix in order to advance to a course for which these courses are prerequisites.

Name: _____

Advisor: _____

**Other Requirements
Mechanical Engineering Technology**



•A minimum of 40 hours must be upper division

•**Communications 6hrs:** ENGL 3323, SPCH 2713 or 3703 or 3723.

•**MET Related Specialty 9 hrs.:**
MET 3353 FS/L, MET 3413 or 3423 F/C, MET 3573 F/L, MET 4023 SuS/Y, MET 4033 F/Y, MET 4113 SuF/A, MET 4173 F/V, MET 4203 SuS/V, MET4303 S/L, MET 4313 S/C, MET 4050 F/C, MET 4050 F/Y

•**Legend:** Fall = F, Spring = S, Summer =Su; Alexander = A, Chang = C, Yang = Y, Lewis = L, Vora = V.

•**Common Upper Division Controlled Electives 6hrs (at least 3hrs Upp. Div):**
MGMT 3013, MGMT 3313, LSB 3213, MKTG 3213, ENGR, ENGR TECH, MATH, CHEM, PHYSICS, STATISTICS, or **(See Above) for additional MET Related Specialty.**

•For further information, contact the MET Program Coordinator, Faculty or Director of Engineering Technology.

•A flexible study plan is designed to meet each student's individual goals.